



Comune di Castiglione del Lago
 Provincia di Perugia
PRG-PO 2017



Piano Regolatore Generale Parte Operativa



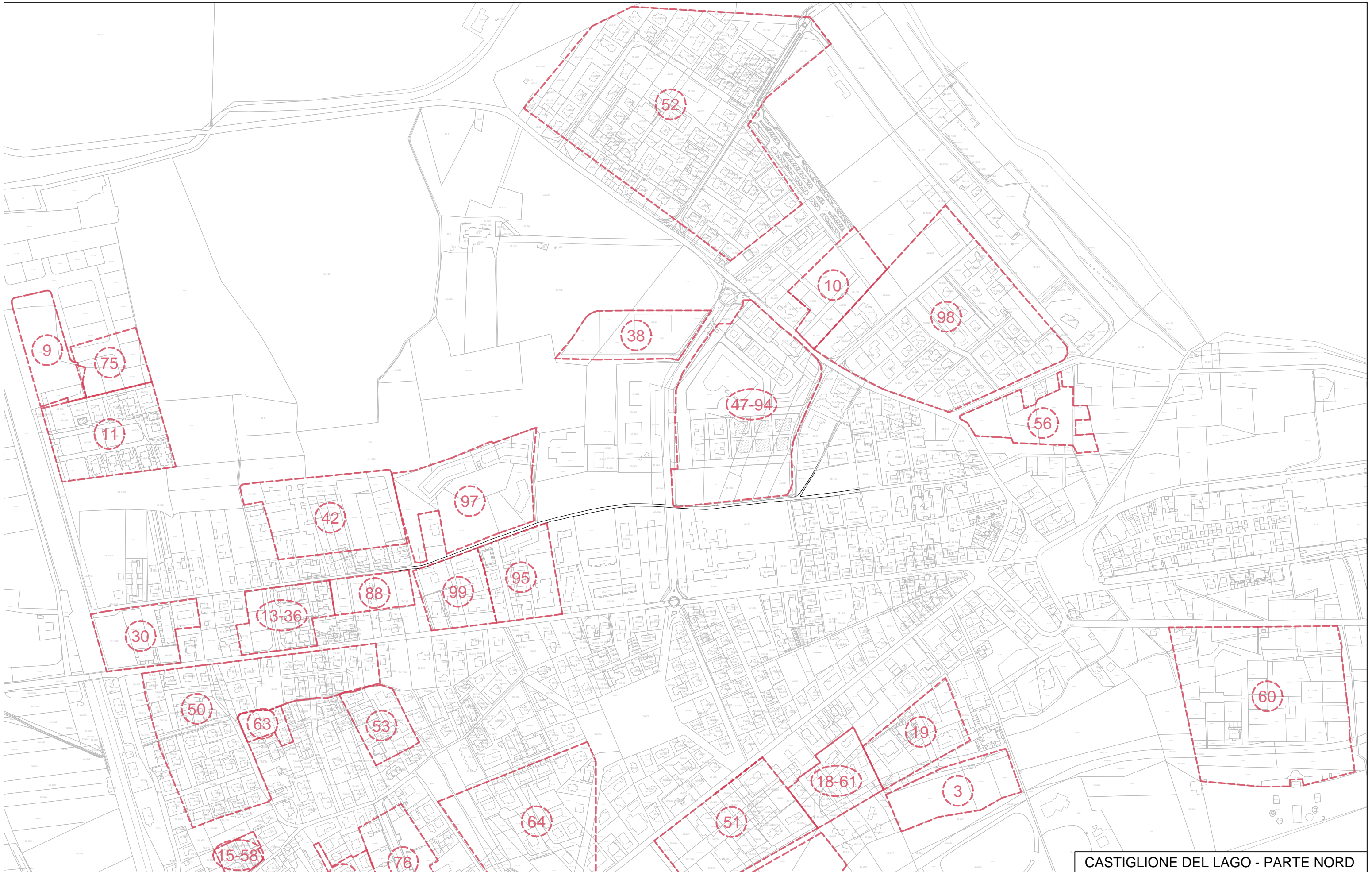
Progettare città e territorio vuol dire inserirsi in questo processo di trasformazione/stratificazione antropica per orientarlo, con forme e contenuti che si differenziano nel tempo e nello spazio, alla eliminazione di quelli che le comunità insediate considerano difetti ed alla attribuzione di ulteriori pregi

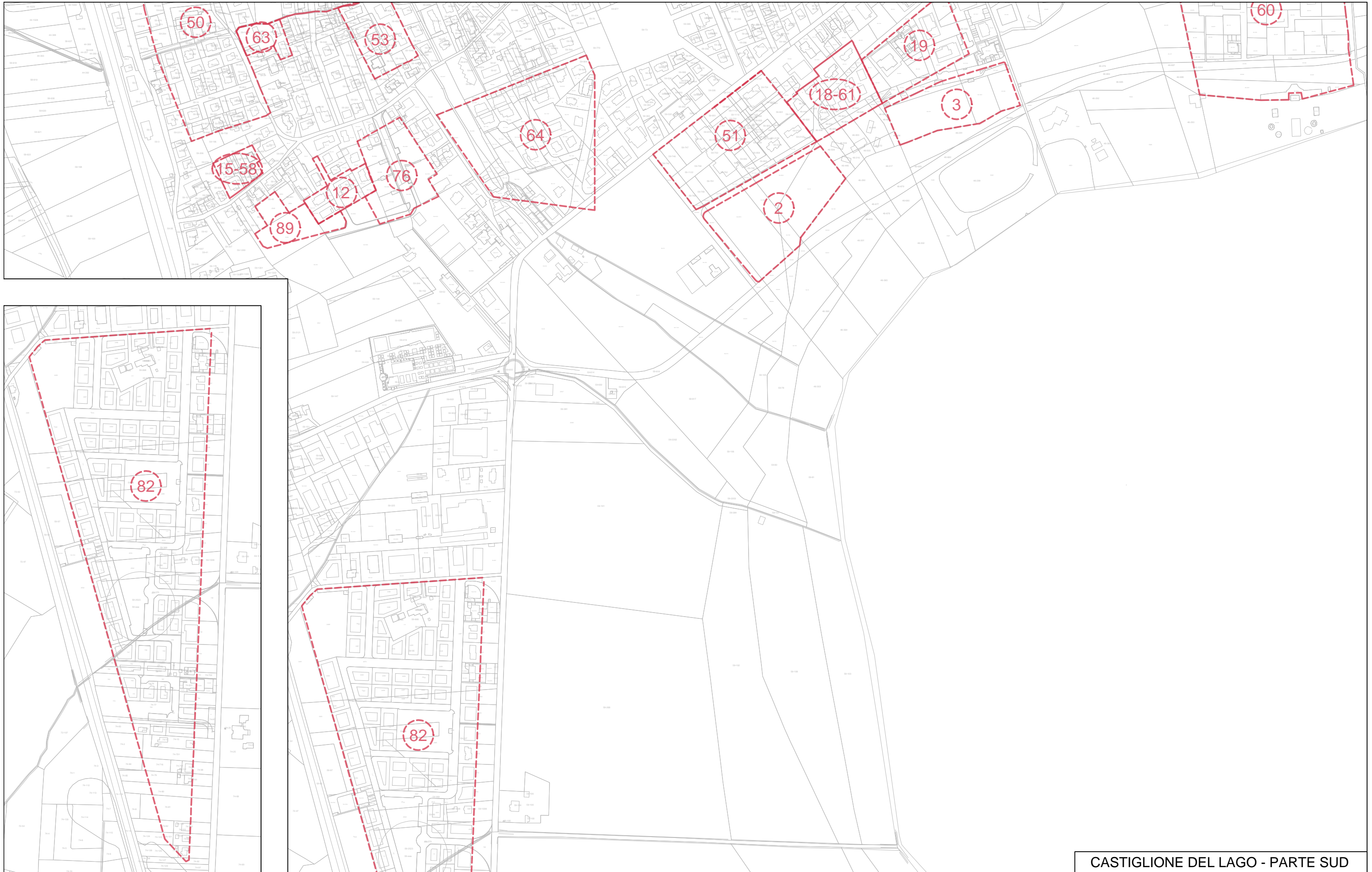
Gianluigi Nigro

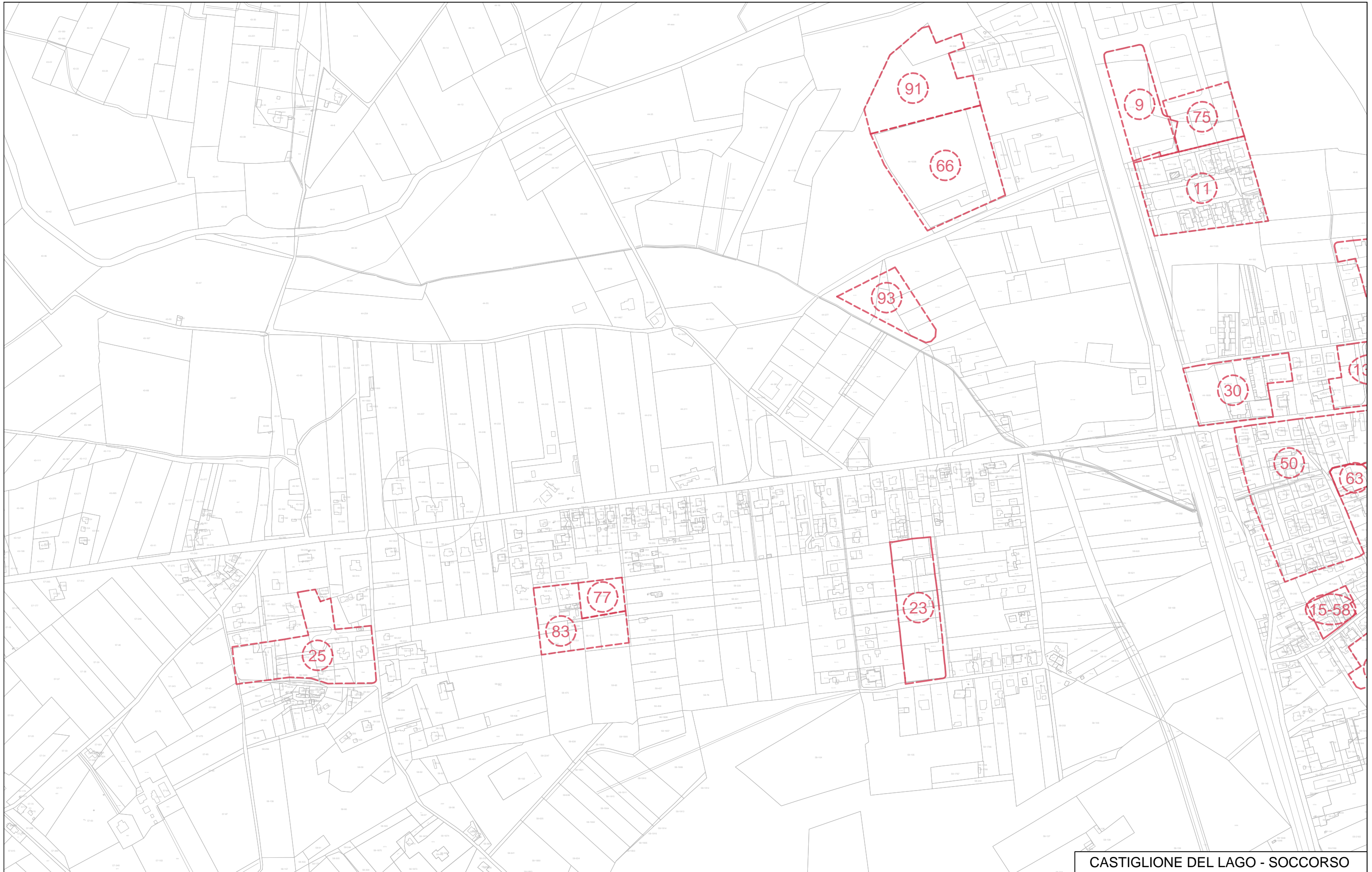
P.O.G.13.1 - Pianificazione Attuativa Progressa Quadri di Unione

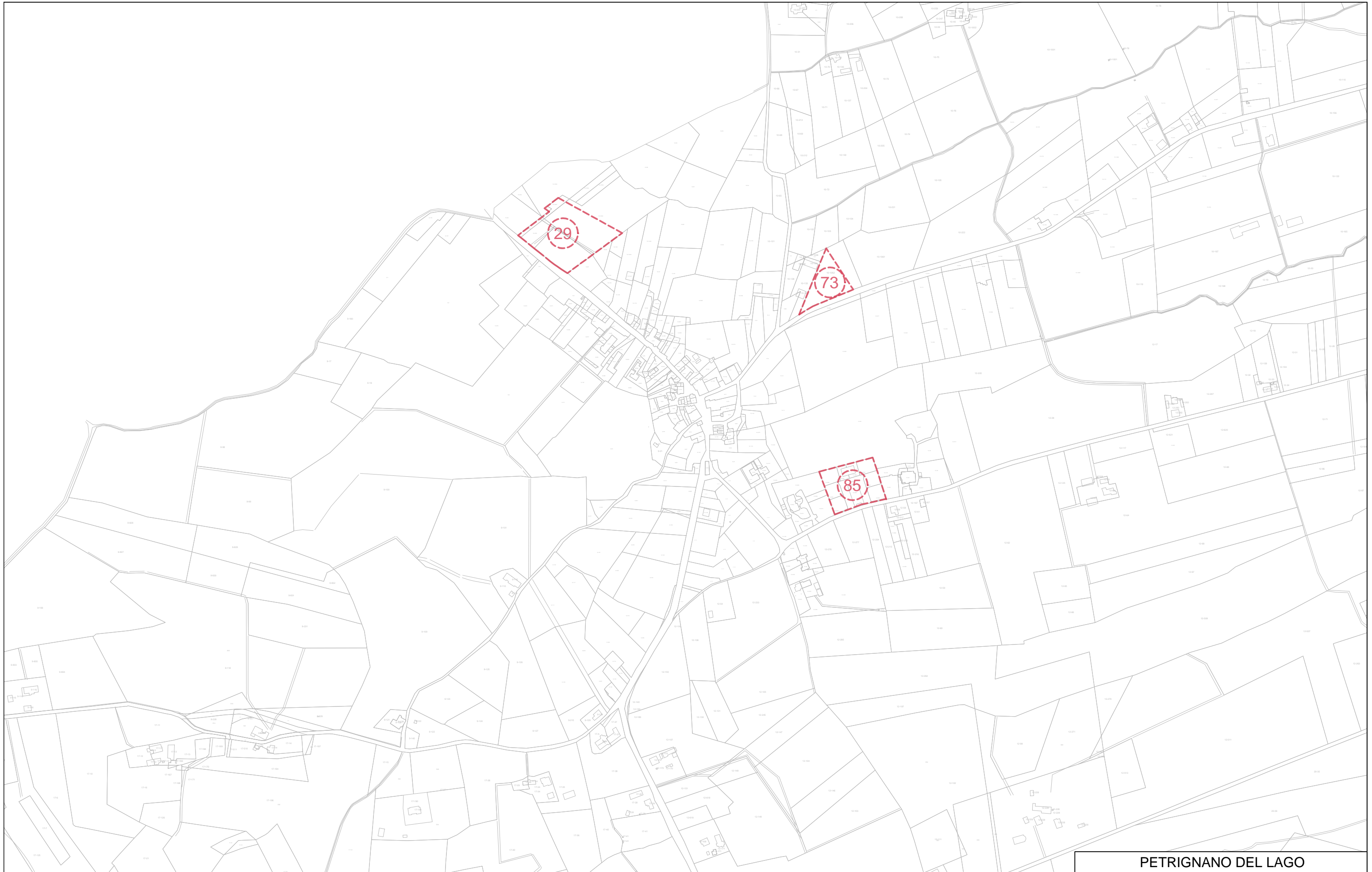
<i>Adozione con Delibera C. C. n° del</i>	<i>Controdeduzione con Delibera C. C. n° del</i>	<i>Approvazione con Delibera C. C. n° del</i>	
<i>Coordinatore generale</i> ing. Stefano Torrini	<i>Consulente scientifico</i> arch. Mauro Marinelli	<i>Titolare dell'elaborazione</i> Ufficio di Piano	<i>Periodo elaborazione</i> 2013 - 2014

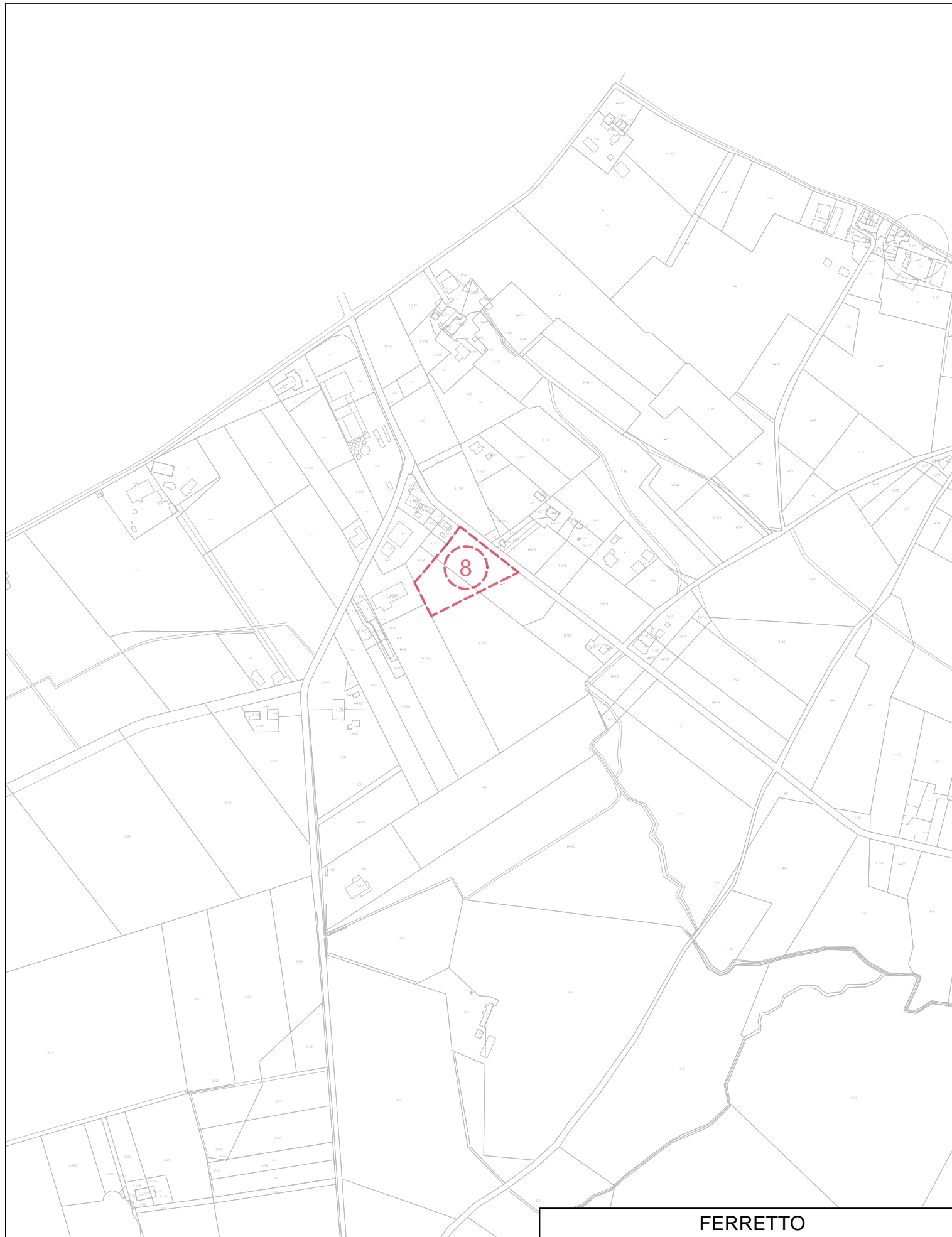
UFFICIO DI PIANO		
<i>Sindaco</i> Sergio Batino	<i>Consulenti</i> arch. Francesco Nigro arch. Roberto Parotto geol. Stefano Guerrini	<i>Coordinatore Ufficio di Piano</i> arch. Mauro Marinelli
<i>Assessore Urbanistica</i> Nicola Cittadini	<i>Collaboratori</i> arch. Alessio Fantucci arch. Alessandro Parrettini arch. Alessio Pucci	<i>Operatore Ufficio di Piano</i> ing.ir Monia Torrini



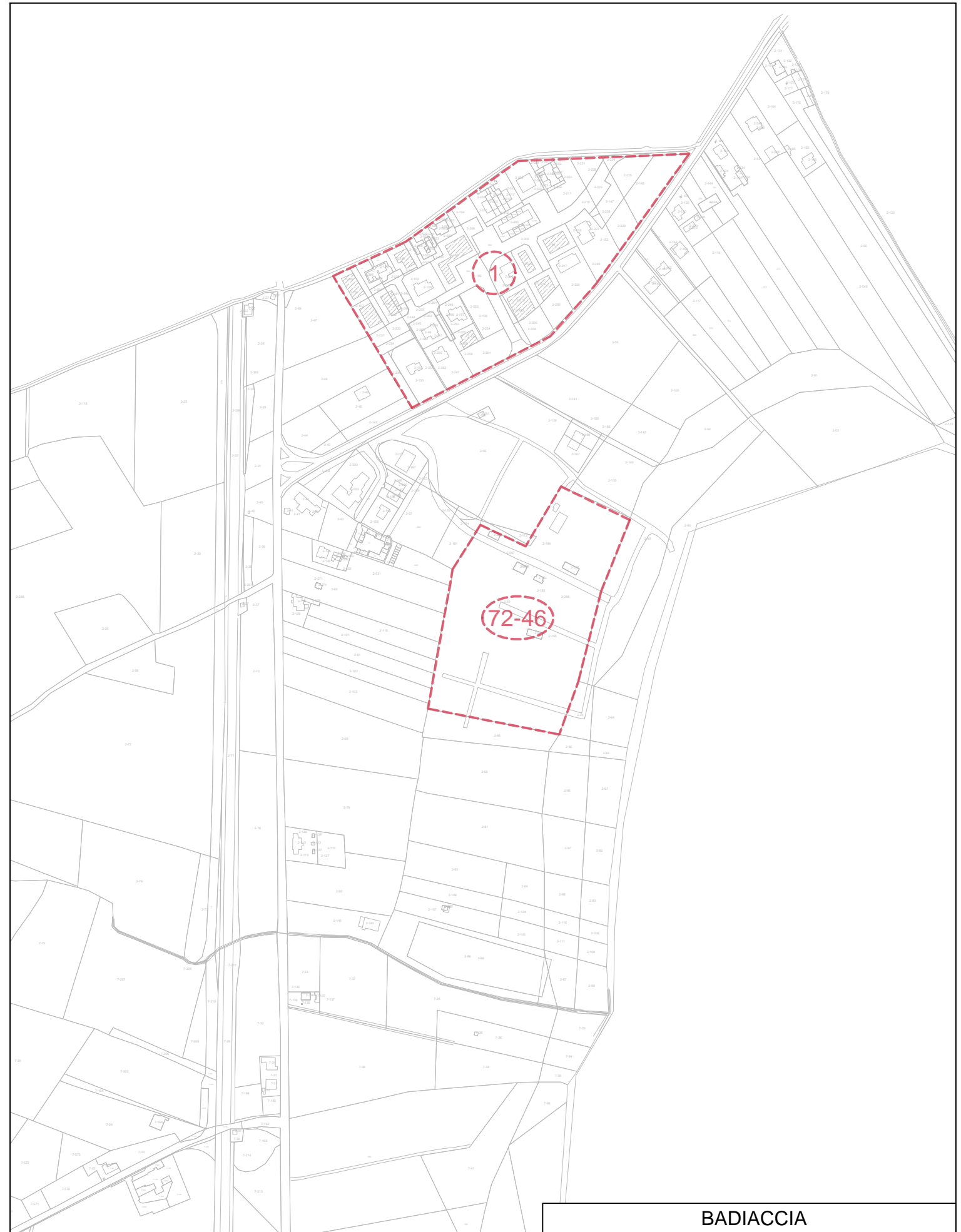




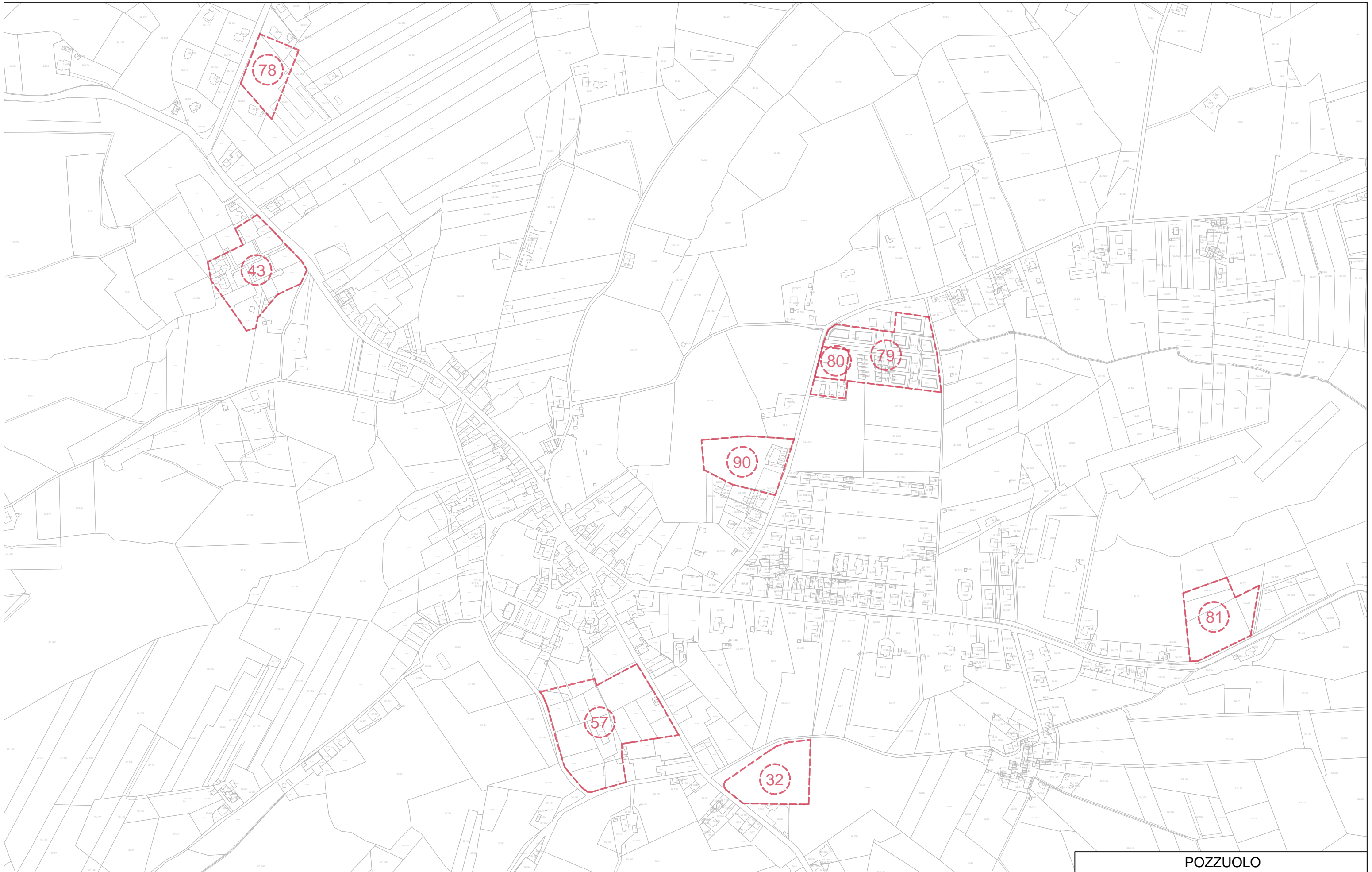




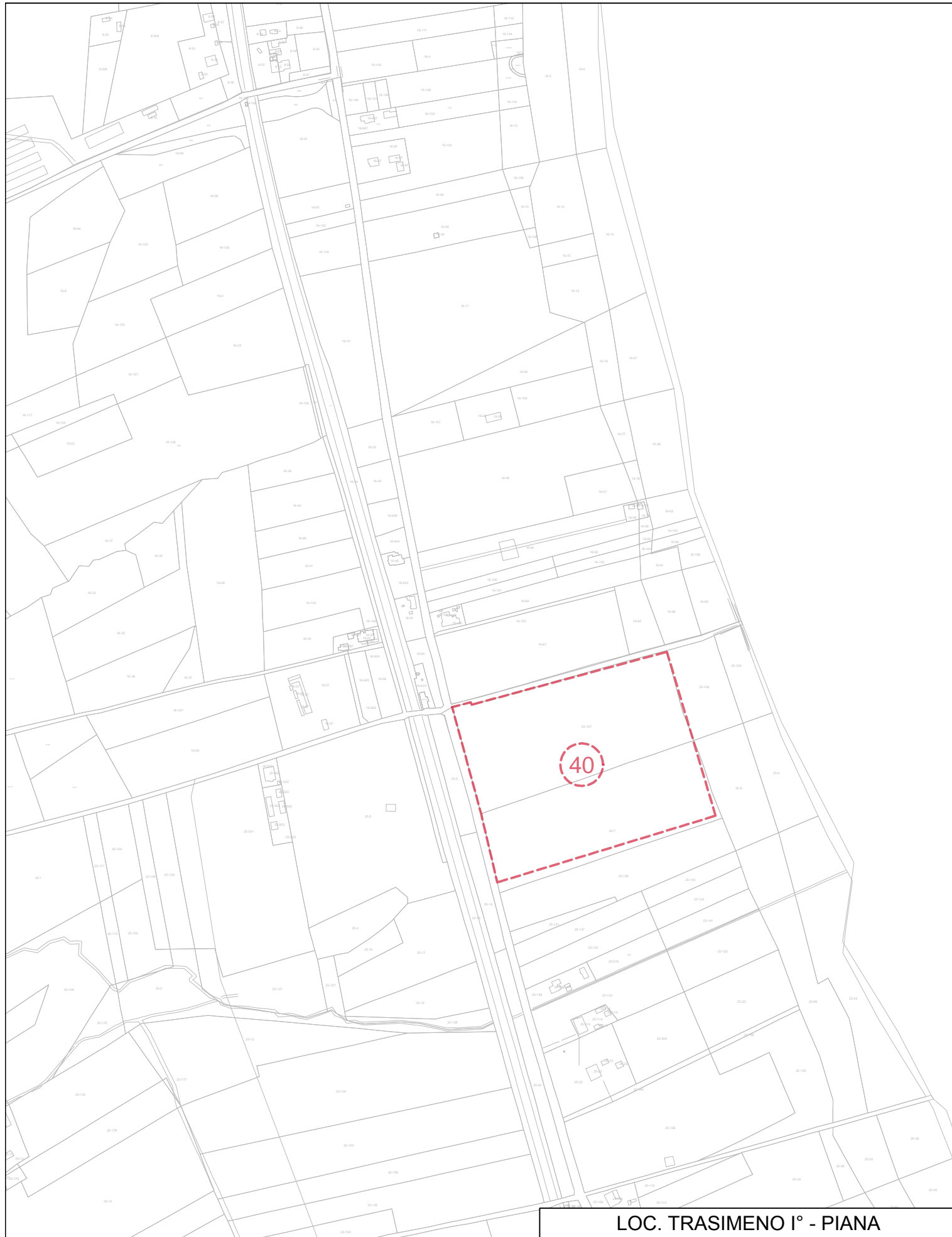
FERRETTO



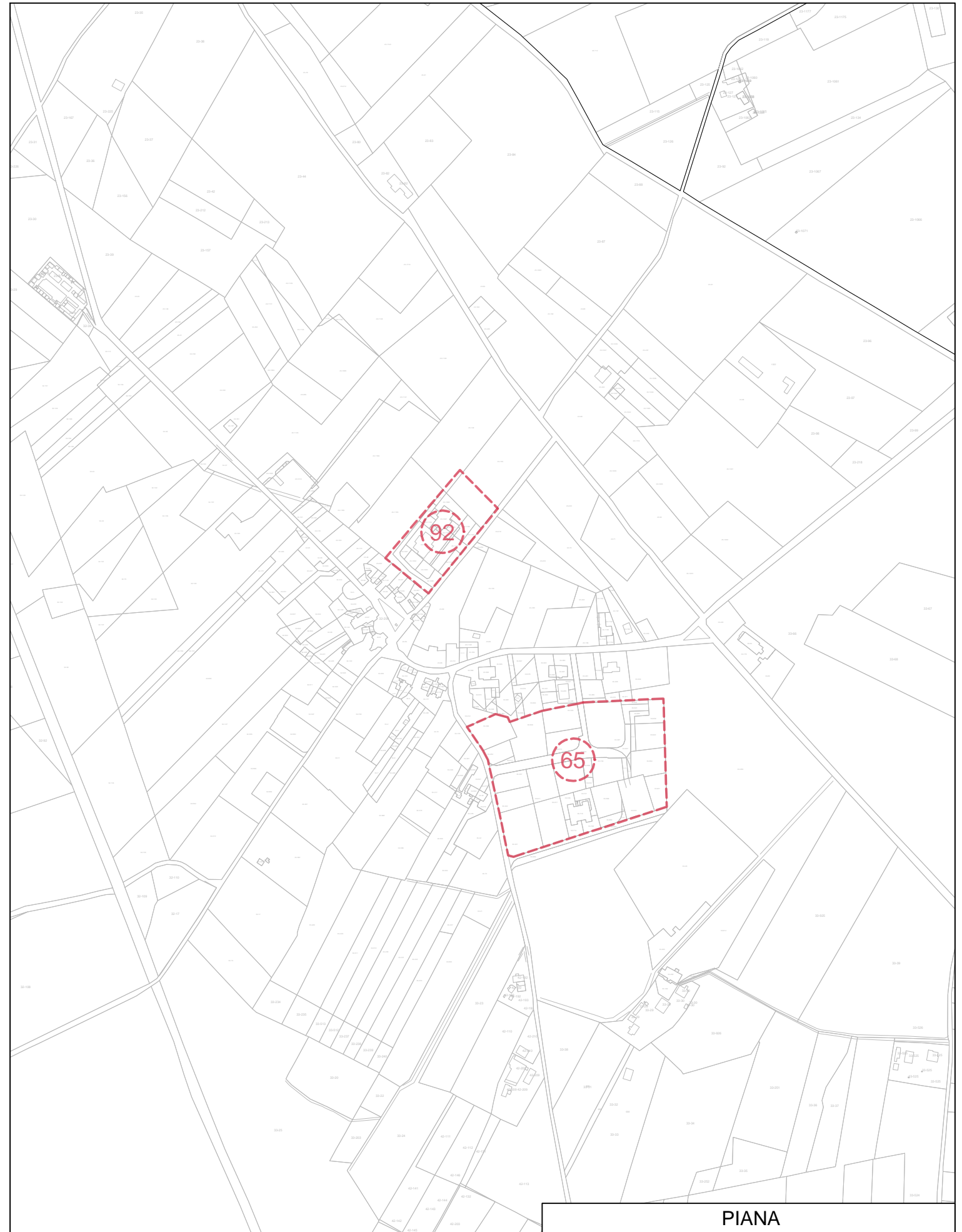
BADIACCIA



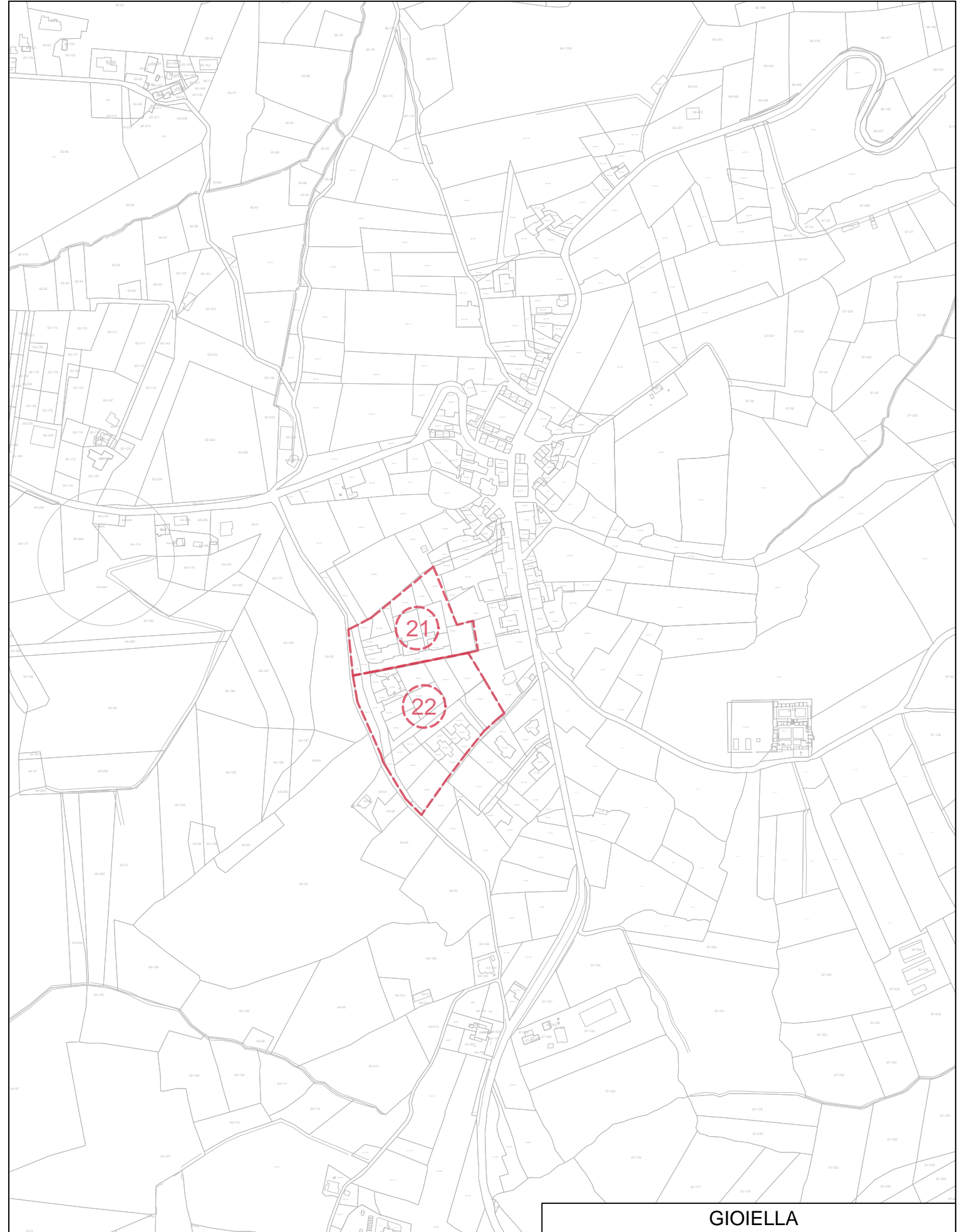
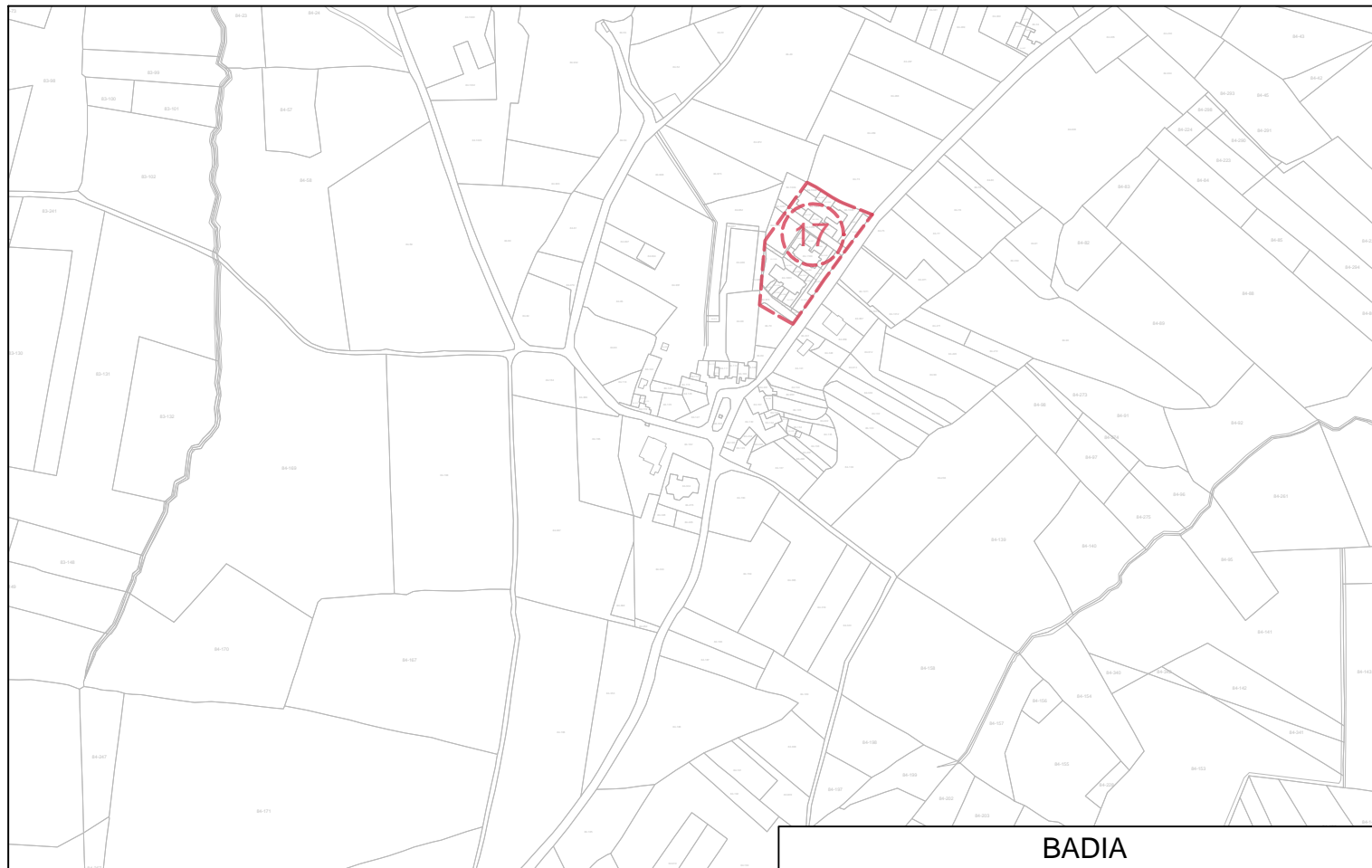
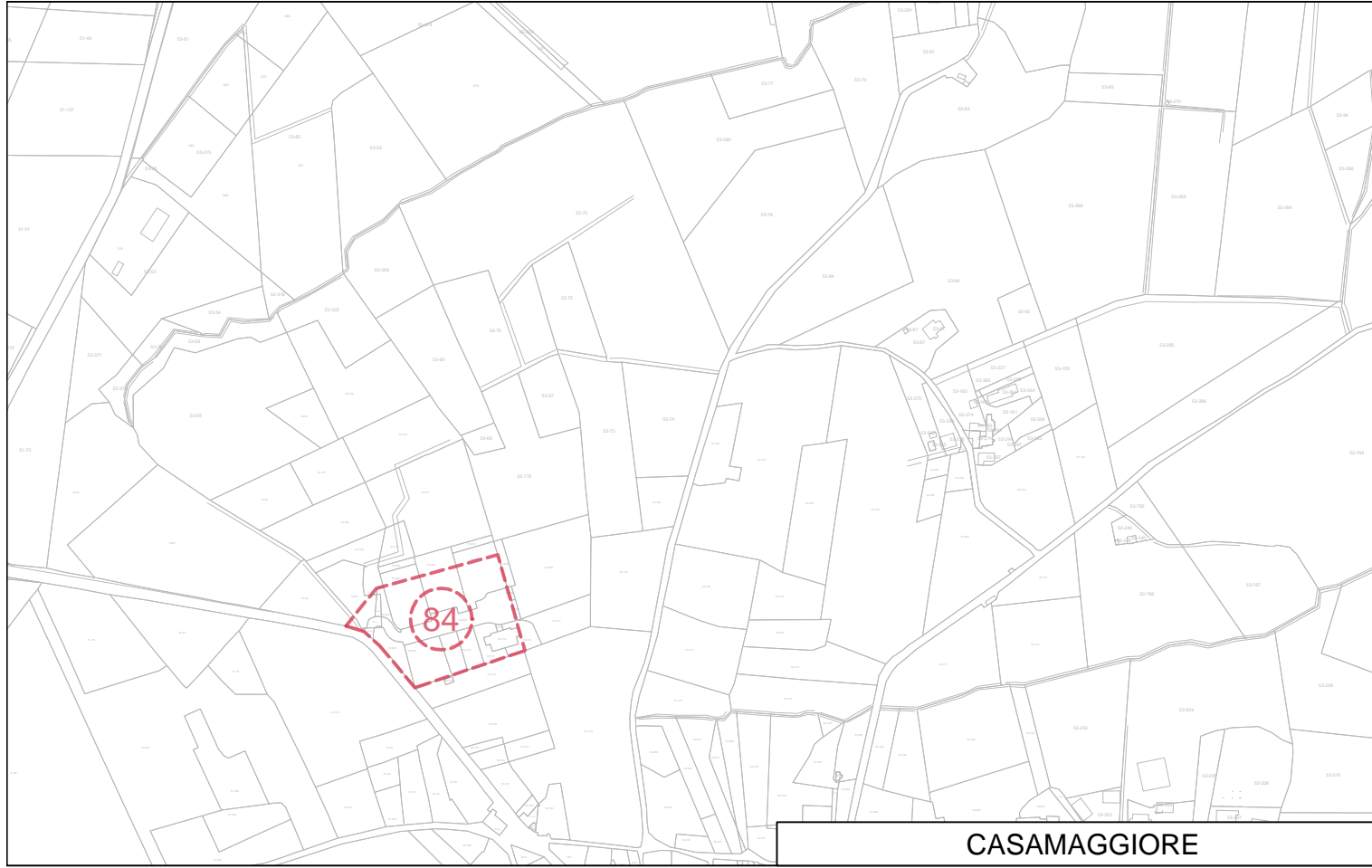
POZZUOLO

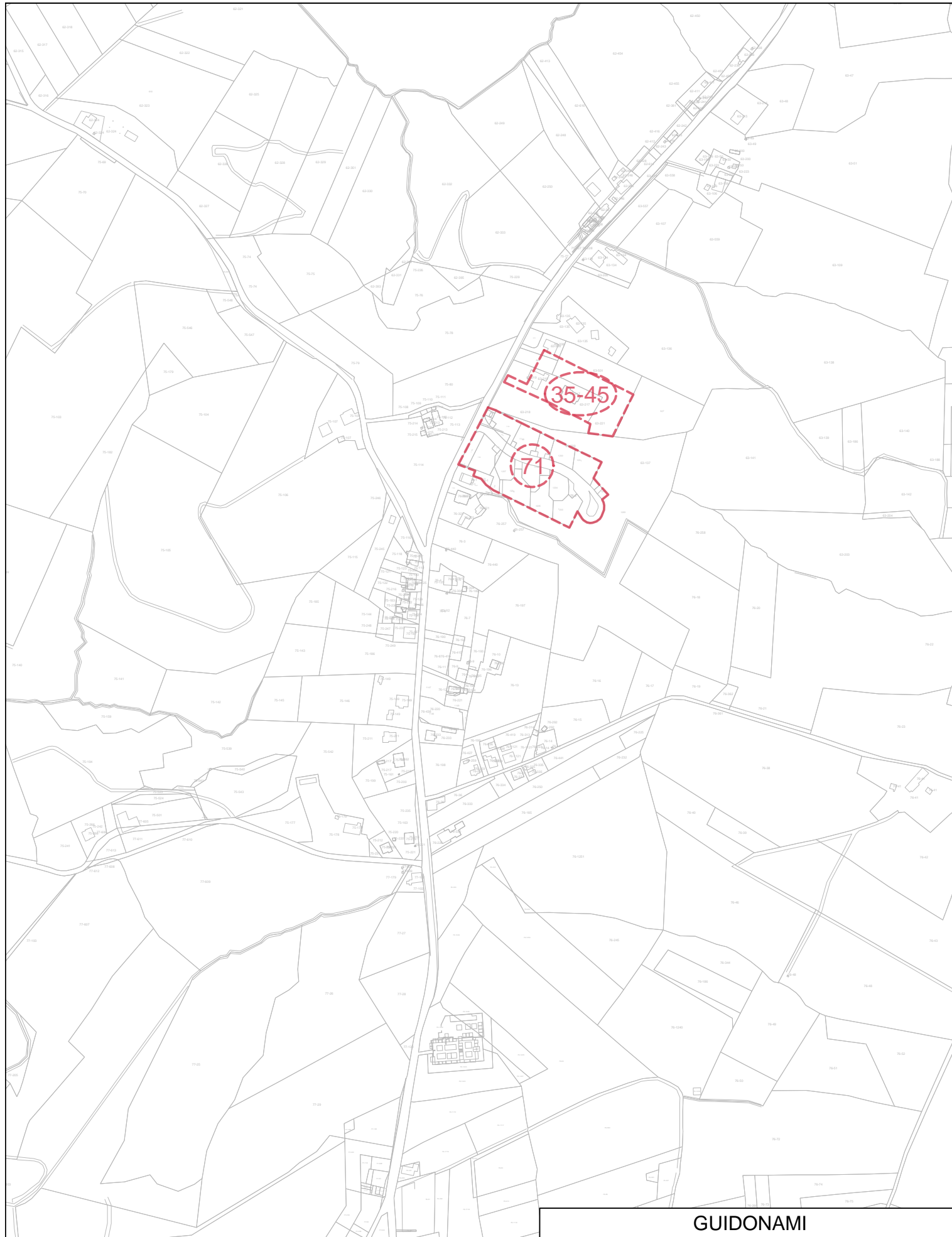


LOC. TRASIMENO I° - PIANA

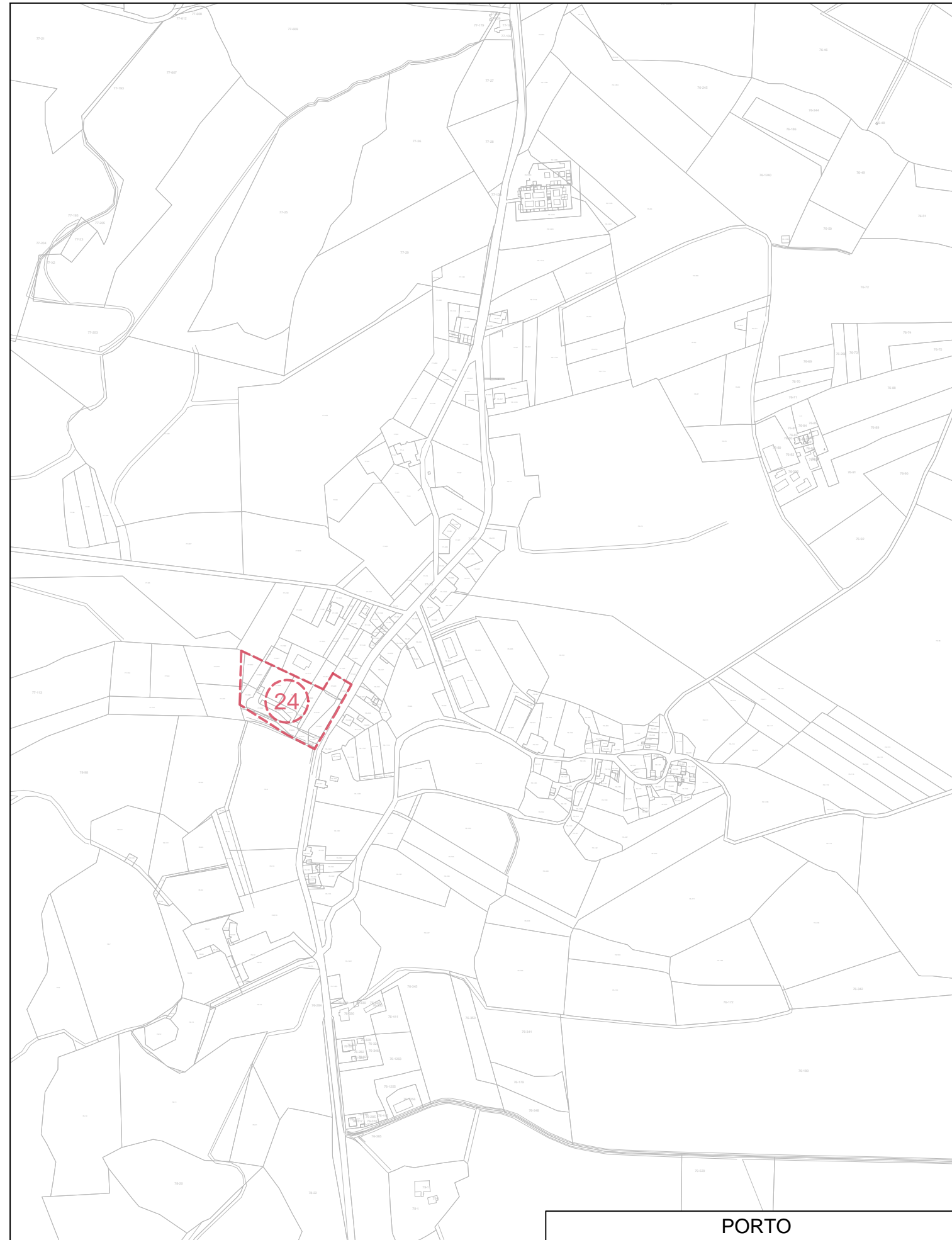


PIANA

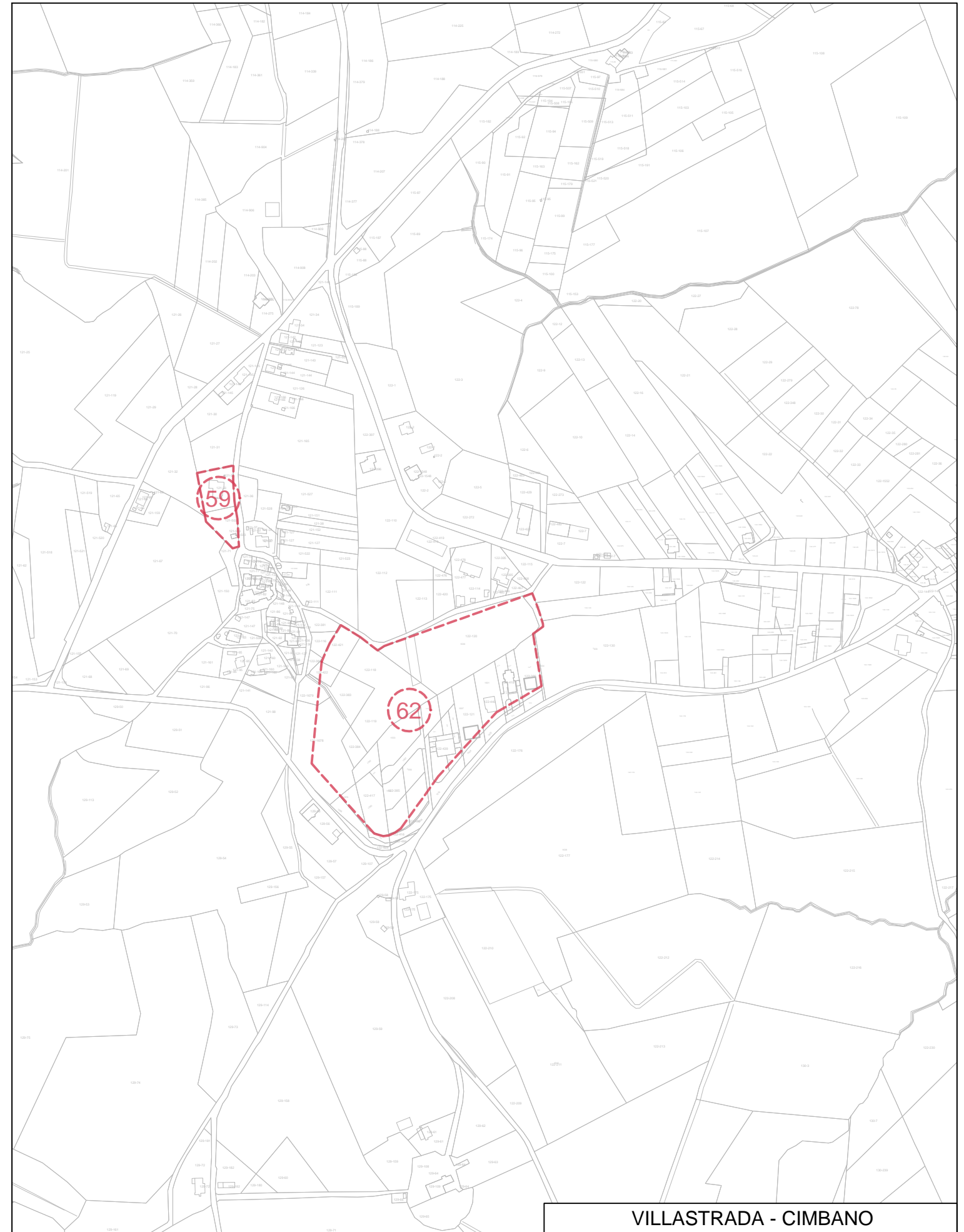
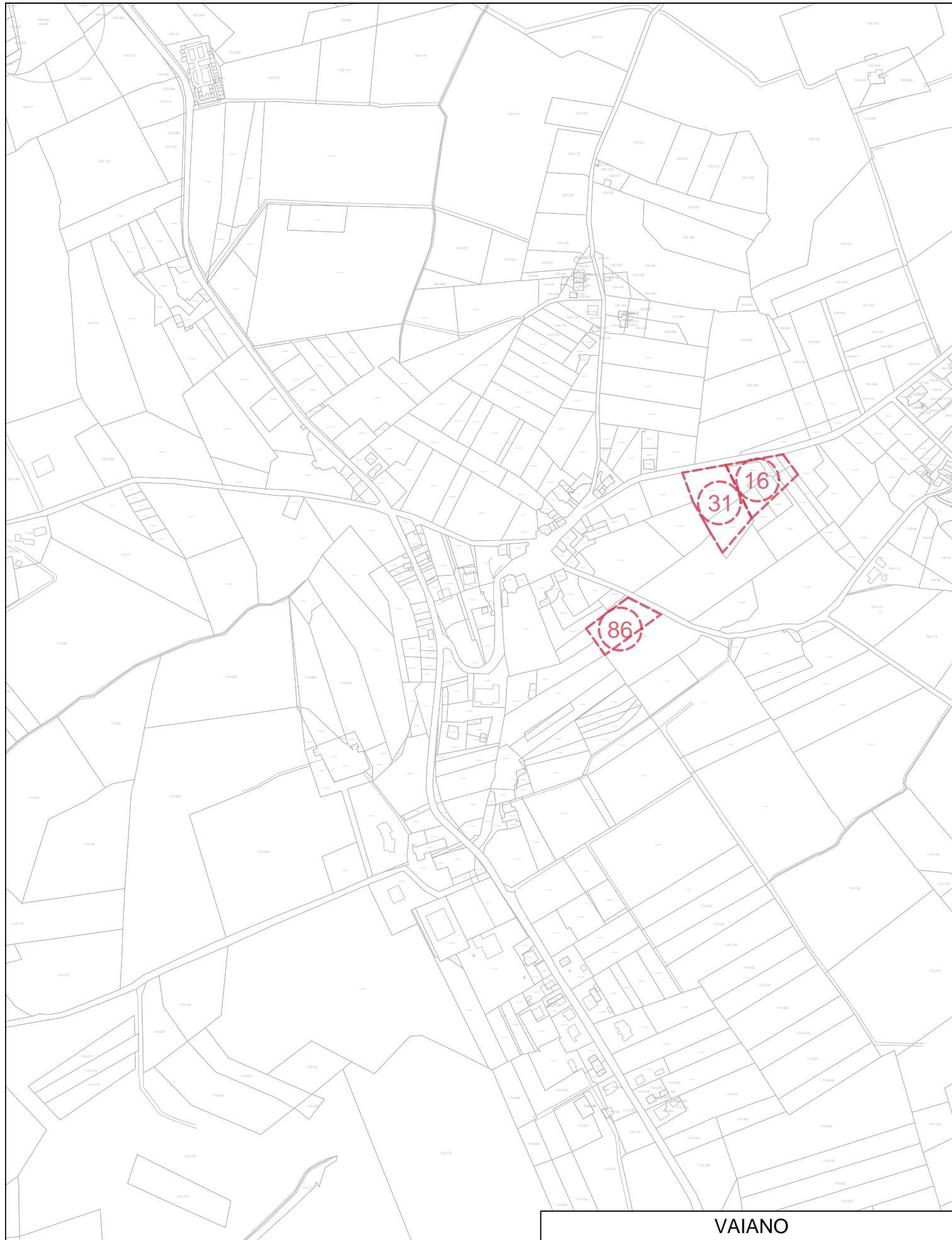


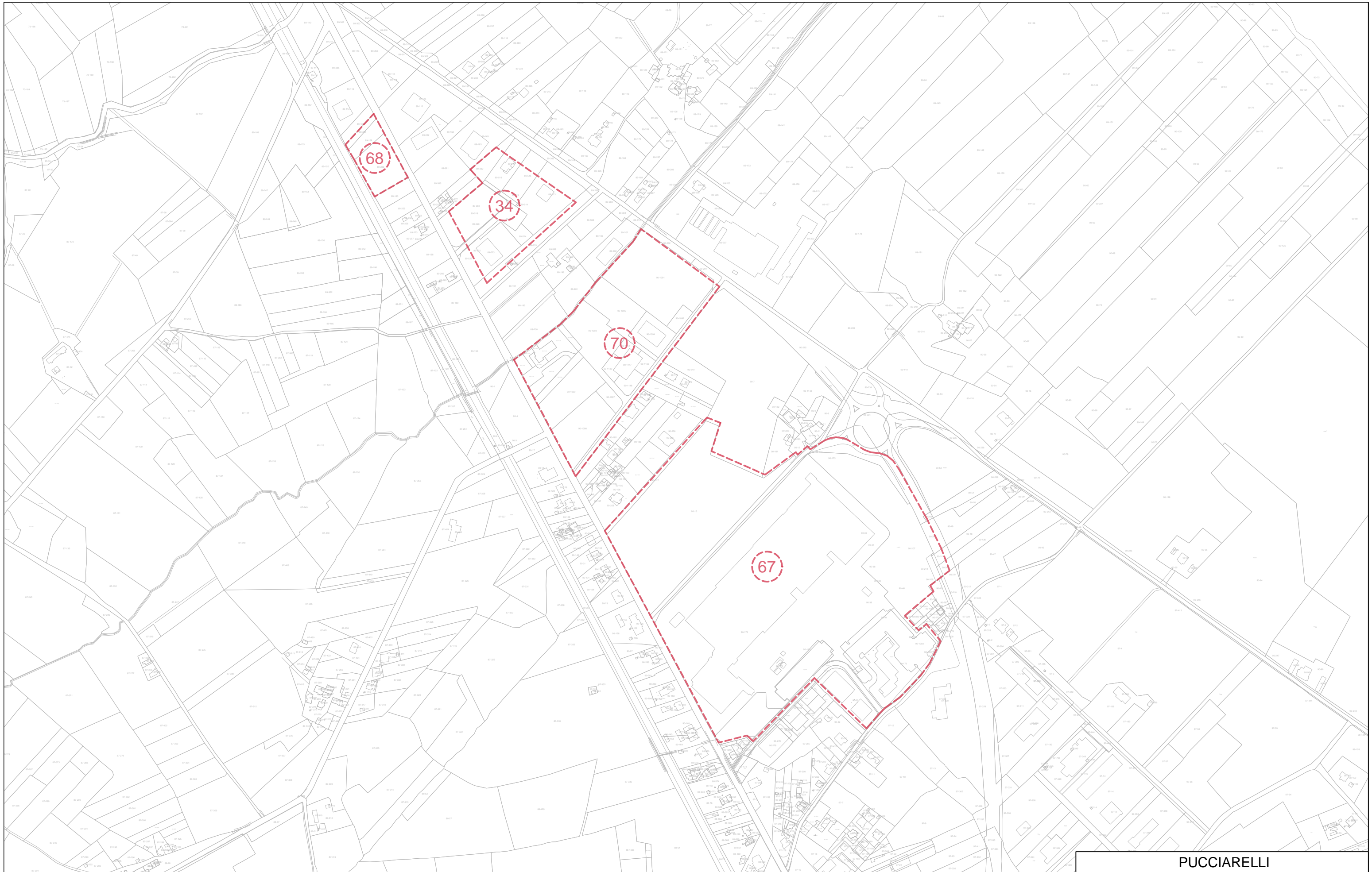


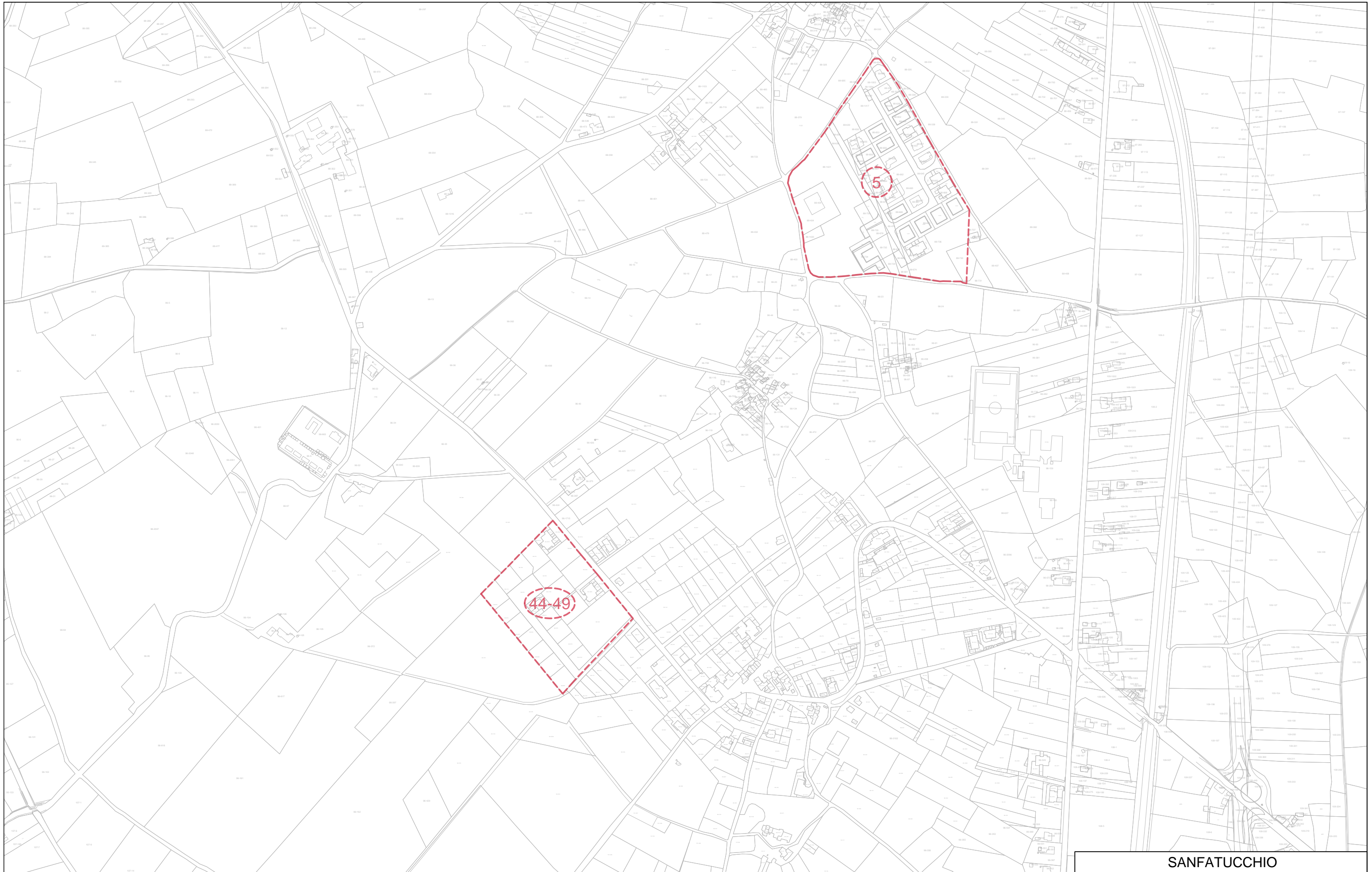
GUIDONAMI

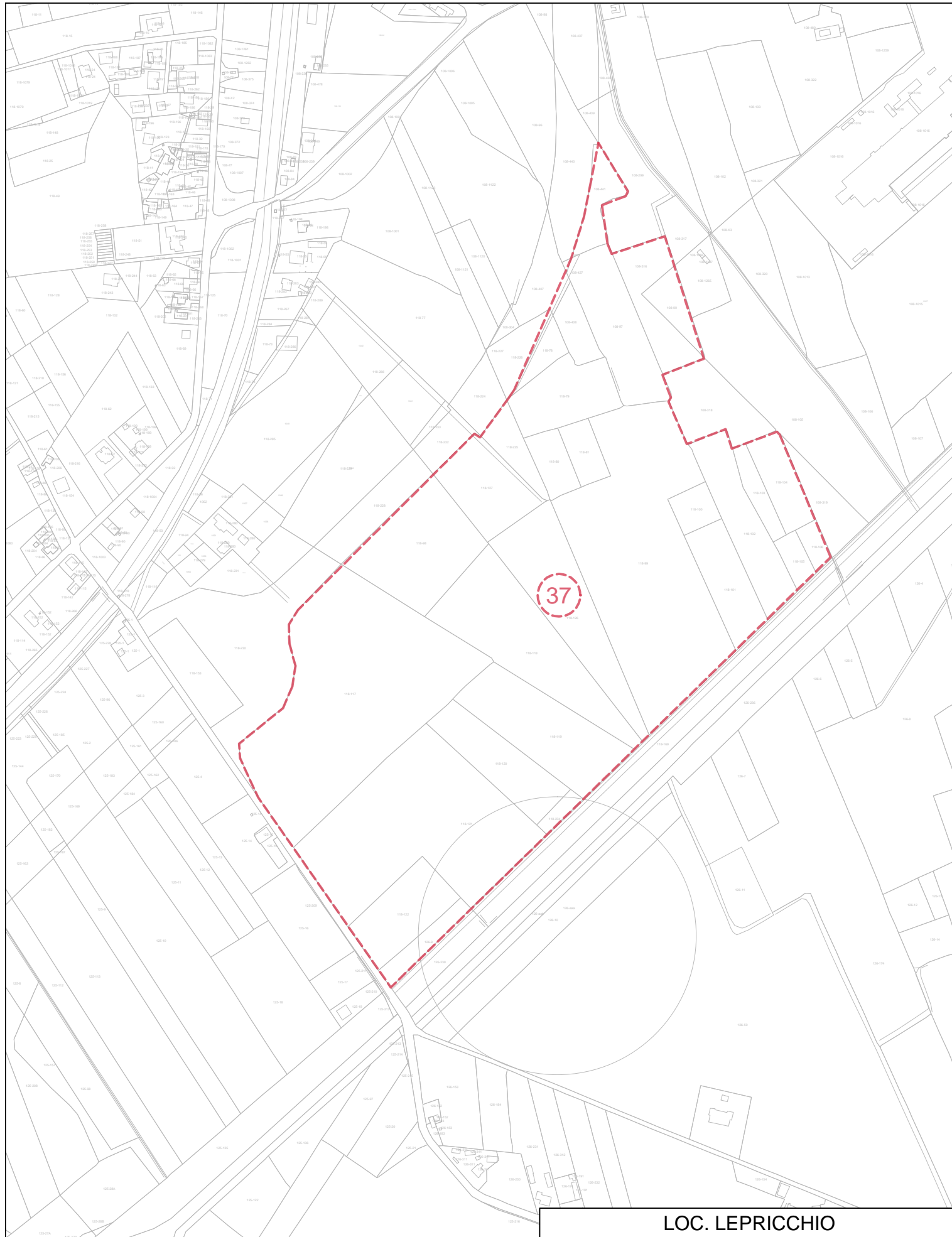


PORTO

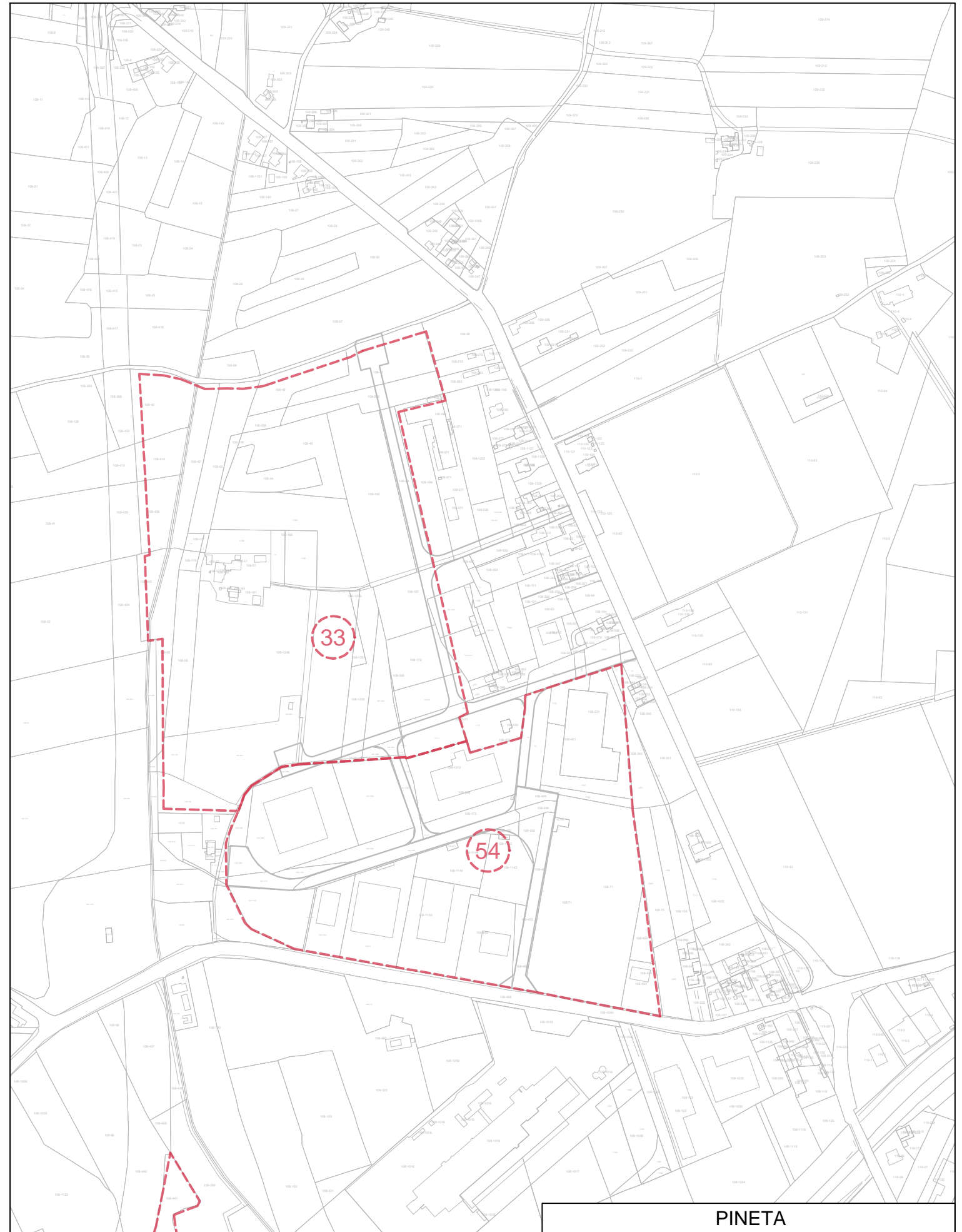




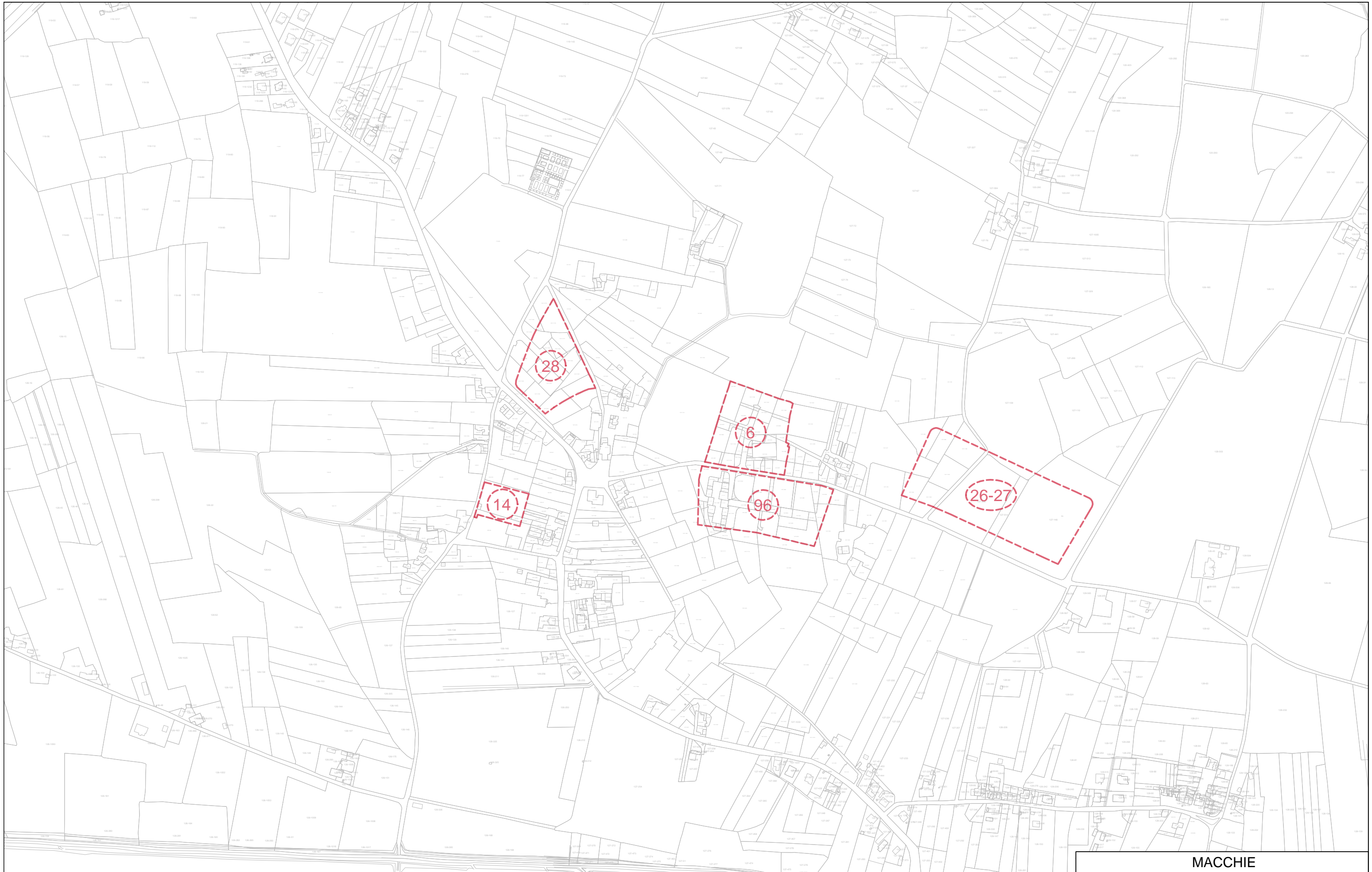




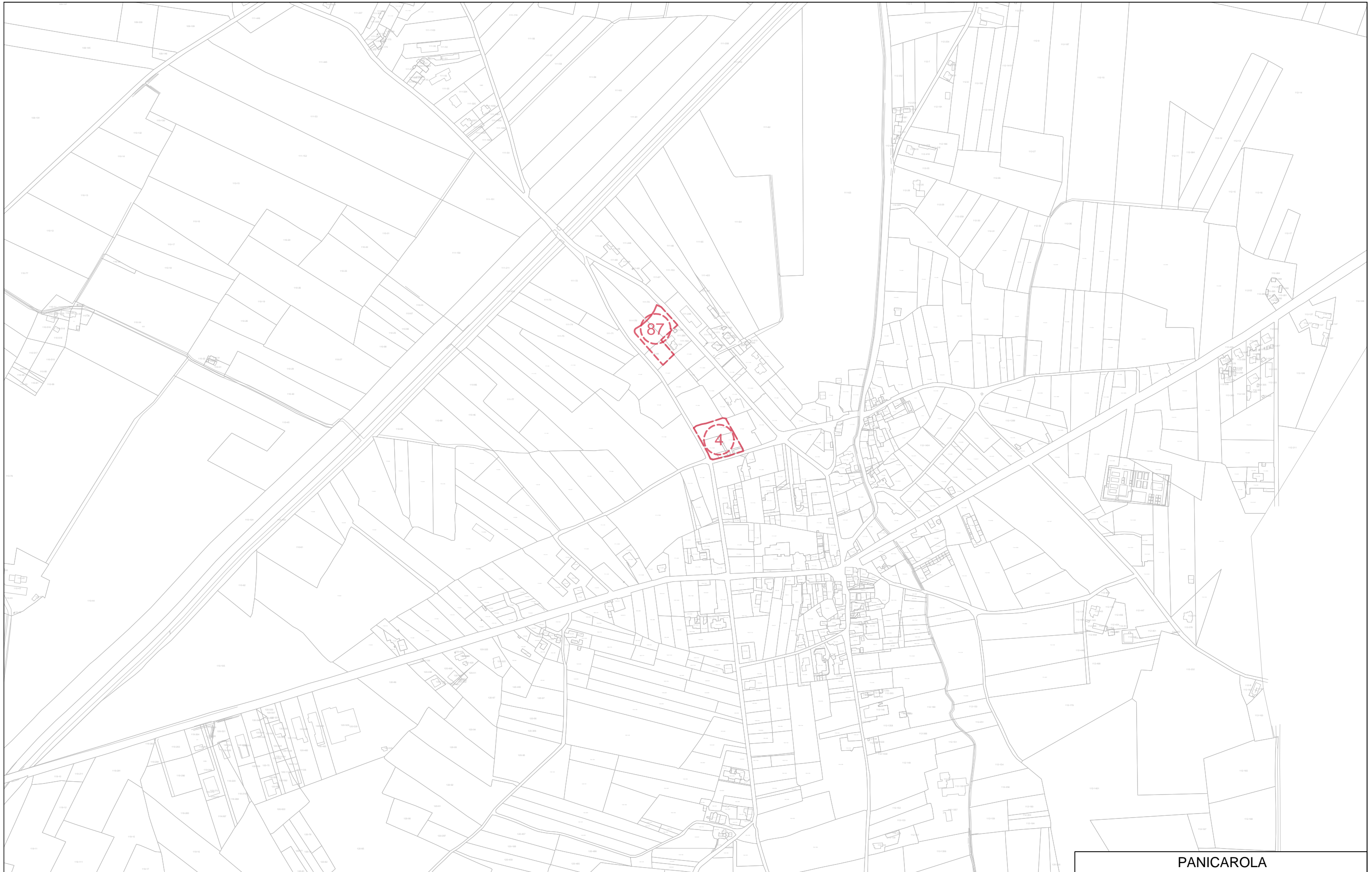
LOC. LEPRICCHIO



PINETA



MACCHIE



PANICAROLA